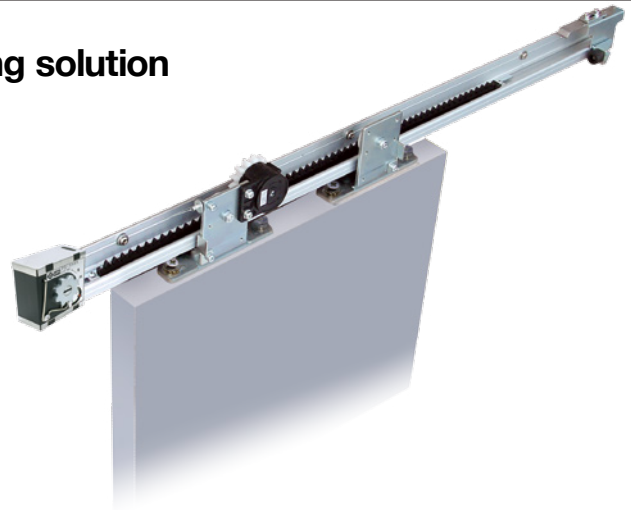


**Highly reliable and cost effective self-closing solution for steel sliding doors.**  
**Safe & long term operation guaranteed.**  
**Simple to install, set up and use.**



## Features

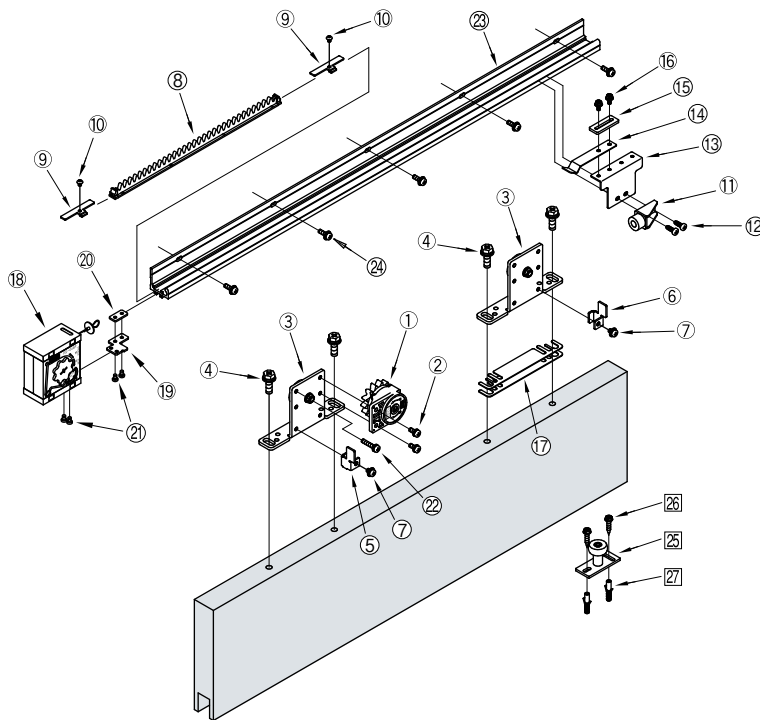
- All parts required for horizontal installation on light steel door (e.g. guide rail, guide roller, stop device, etc.) are included in standard component.
- The product can be used for both left and right hand sliding doors and can be easily converted between left and right by simple adjustment.

## Specifications

right and left handed opening

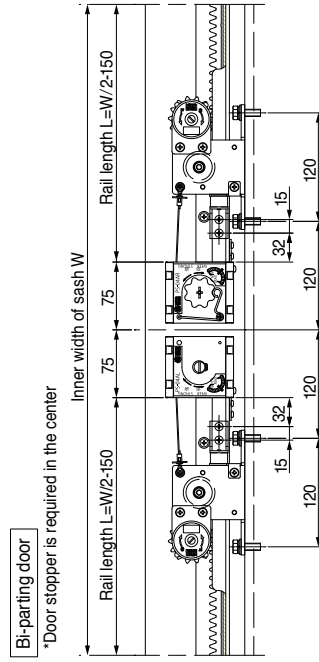
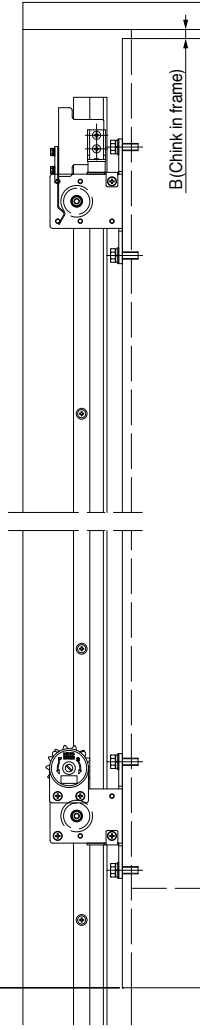
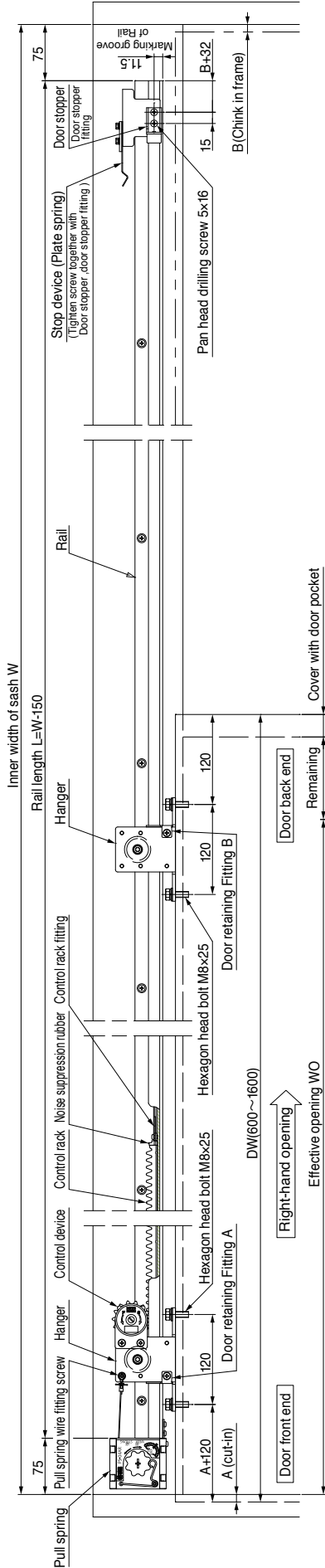
Model		NSC-C60V-22	NSC-C60V-31
Applicable doors	Weight [kg]	10-60	
	Width [mm]	600-1,200	1,200-1,600
Max. stroke [mm]		1,500	
Closing drive system		Spiral spring type	
Controlling system		Fluid friction resistance type	
Controlling time		7-11 seconds (with a door-opening distance of 900mm)	
Initial opening force [N]		6.5 (Door weight 10kg), 8.9 (Door weight 60kg)	
Durability		More than half million open/close operations	
Control device		SC-C06V	
Pull spring		PS-04A	
Rail length [m]		2.2	3.1

## Part details

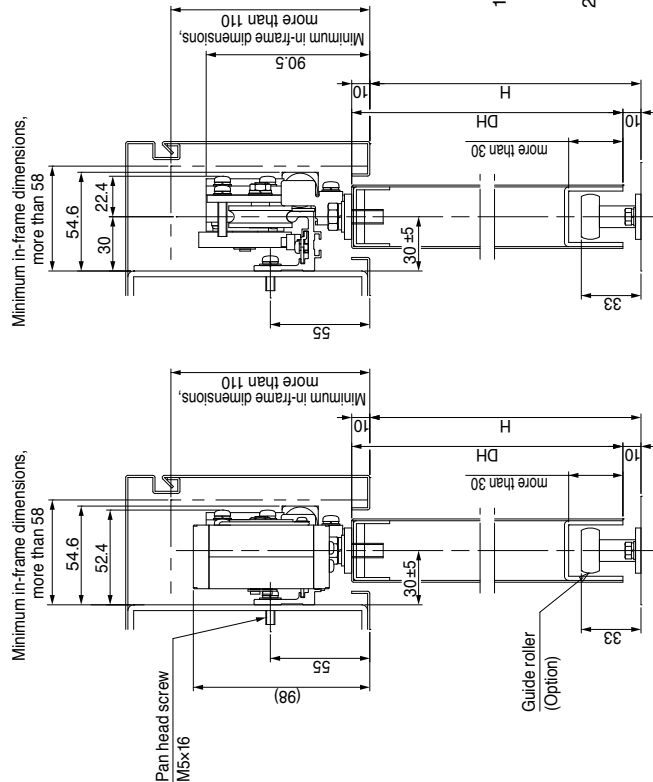
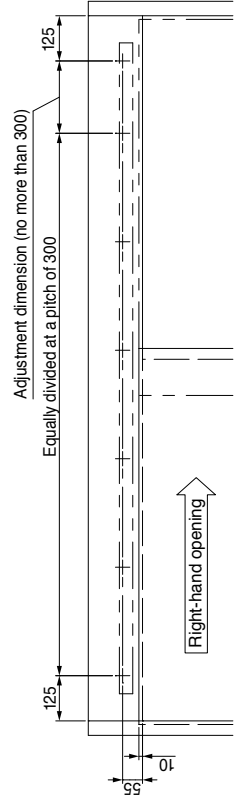


No.	Part	Q'ty	Remark
①	Control device	1	For control device
②	M5×12 pan head screw	2	
③	Hanger	2	For hanger
④	M8×25 cross recessed hexagon head screw	4	
⑤	Door retaining fitting Hanger L	1	Door retention
⑥	Door retaining fitting Hanger R	1	
⑦	M5×8 pan head screw	2	For control rack
⑧	Control rack	1	
⑨	Control rack fitting	2	For stop device
⑩	M4X5 hexagon socket button head screw	2	
⑪	Door stopper	1	For door stopper
⑫	5x16 pan head drilling screw	2	
⑬	Plate spring bracket	1	For pull spring
⑭	Plate spring	1	
⑮	Stop force adjusting plate	1	For rail
⑯	M4X10 cross recessed hexagon head screw	2	
⑰	Height adjusting plate (t = 1.0)	4	For guide roller (Option)
⑱	Pull spring	1	
⑲	Pull spring bracket	1	For Fischer plug
⑳	Plate nut	1	
㉑	M4×6 pan head screw	4	For rail
㉒	M5×25 pan head screw	1	
㉓	Rail L = 2200 [L = 3100]	1	For guide roller
㉔	M5×16 pan head screw	8[11]	
㉕	Guide roller *	1	For guide roller (Option)
㉖	φ5×25 Hexagon head tapping screw	2	
	M5×12 Hexagon head screw	2	For Fischer plug
㉗	Fischer plug 6x30	2	

\*4 types, φ5, φ25, φ30, φ35



Position diagram for rail-mounting holes (as viewed from inspection panel) M5 (P=0.8)



1. These diagrams represent a right-hand opening type. The left-hand opening type is a mirror image of these diagrams.
2. Door orientation is right-handed if the door is opened rightwards as viewed from the maintenance panel and left-handed if the door is opened leftwards.