

## Features

- All devices/parts/accessories required for inclining installation on heavy steel door (e.g. guide rail, guide roller, stop device, etc.) are included in standard component.
- Long life time achieved by endless fluid frictional resistance type braking mechanism.
- Adopting longer control rack, the damper (braking) range has become 1.5 times wider than conventional model.
- The product can be used for both left and right hand sliding doors and can be easily converted between left and right by simple adjustment.
- Quick and easy installation without any special tool.

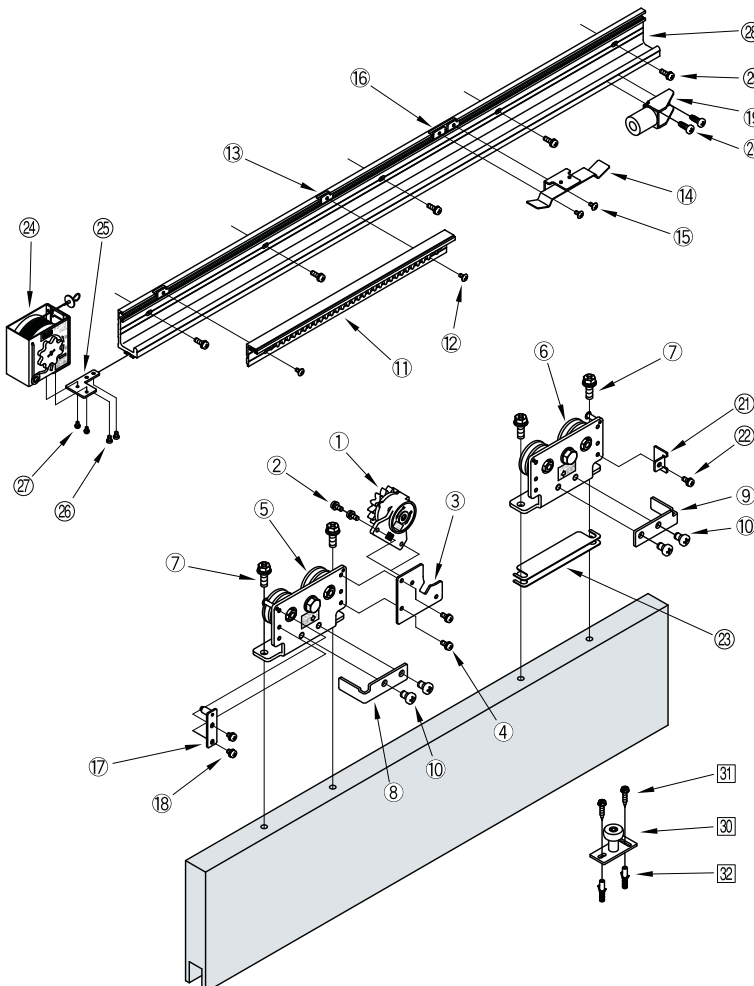


## Specifications

right and left handed opening

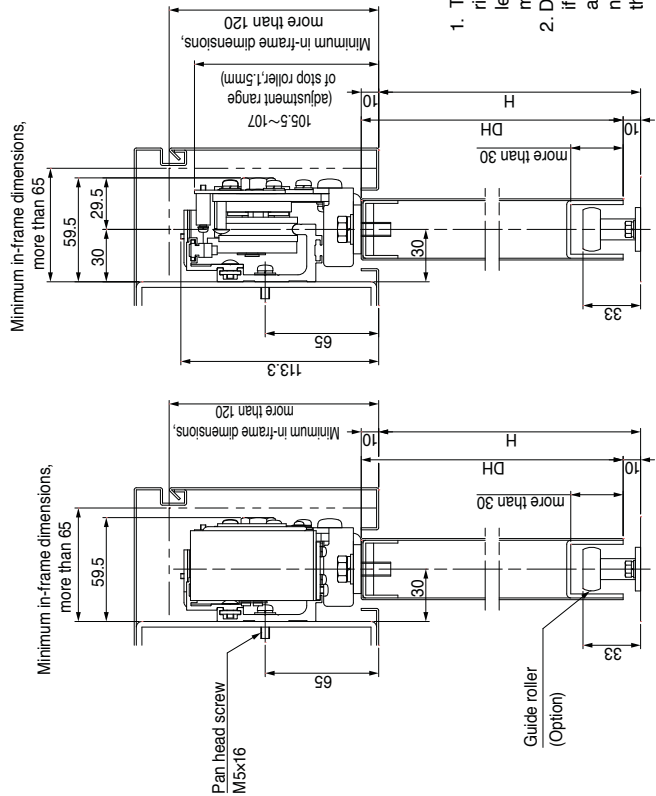
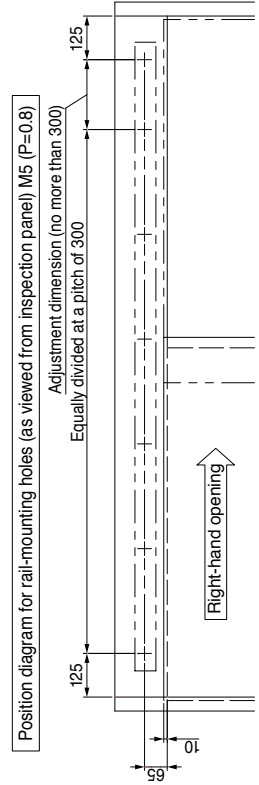
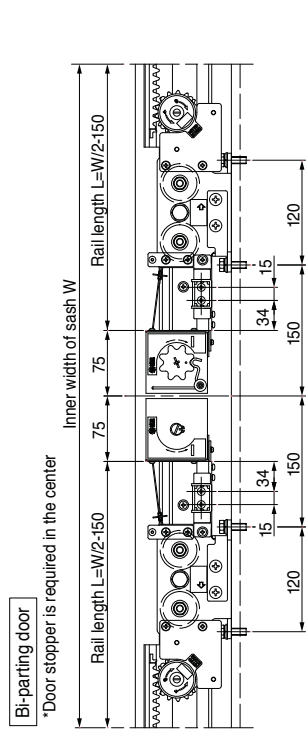
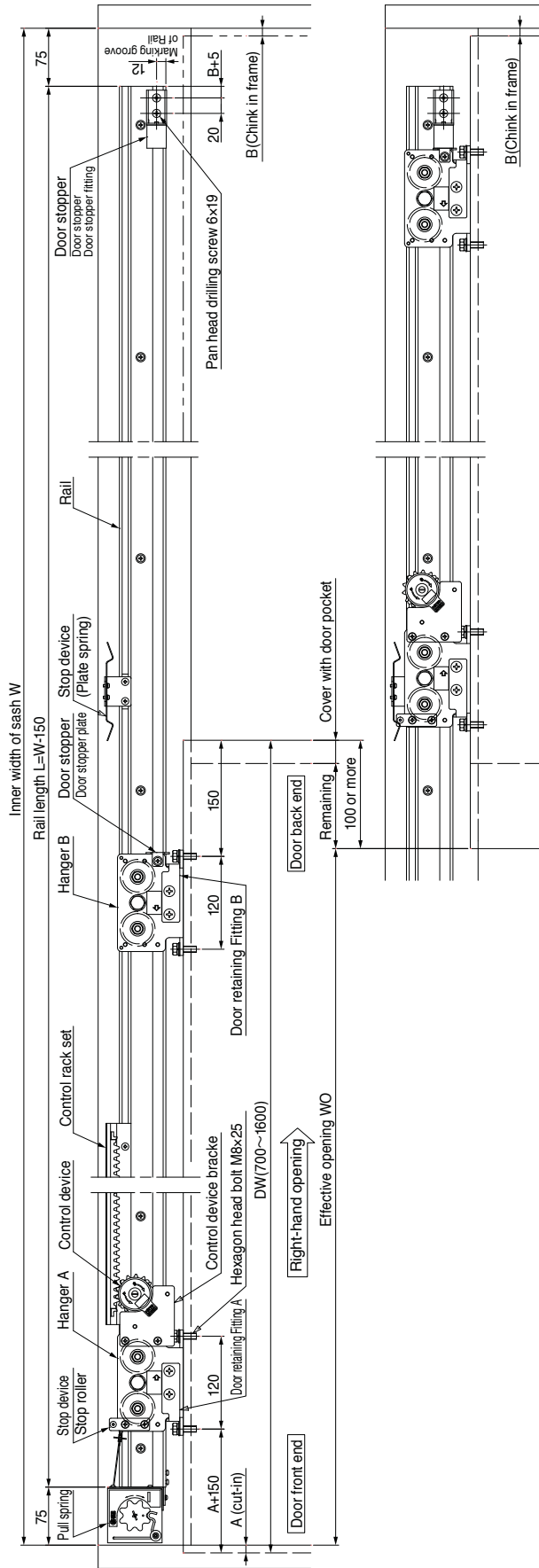
Model		NSC-C1215-22	NSC-C1215-31
Applicable doors	Weight [kg]	80-150	
	Width [mm]	700-1,200	1,200-1,600
Max. stroke [mm]		1,500	
Closing drive system		Spiral spring type	
Controlling system		Fluid friction resistance type	
Controlling time		7-11 seconds (with a door-opening distance of 900mm)	
Initial opening force [N]		15.5 (Door weight 80kg), 19.2 (Door weight 150kg)	
Durability		More than 1 million open/close operations	
Control device		SC-C15	
Pull spring		PS-12	
Rail length [m]		2.2	3.1

## Part details



No.	Part	Q'ty	Remark
①	Control device	1	For control device
②	M5×12 pan head screw	2	
③	Control device bracket	1	
④	M5×12 pan head screw	2	
⑤	Hanger A	1	For hanger
⑥	Hanger B	1	
⑦	M8×25 cross recessed hexagon head bolt	4	Door retention
⑧	Door retaining fitting Hanger A	1	
⑨	Door retaining fitting Hanger B	1	
⑩	M8×12 pan head screw	4	For control rack
⑪	Control rack set	1	
⑫	M4×8 truss head screw	2	
⑬	Plate nut	2	
⑭	Plate spring	1	For door stopper
⑮	M4×8 truss head screw	2	
⑯	Door stopper	1	
⑰	Stop roller	1	
⑱	M5×8 pan head screw	2	For stop device
⑲	Door stopper	1	
⑳	φ6×19 Pan head drilling screw	2	
㉑	Door stopper bearing plate	1	
㉒	M5×8 pan head screw	1	For pull spring
㉓	Height adjusting plate (t = 1.0)	4	
㉔	Pull spring	1	
㉕	Pull spring bracket	1	
㉖	M4×5 pan head screw	2	For rail
㉗	M3×8 pan head screw	2	
㉘	Rail L = 2200 [L = 3100]	1	
㉙	M5×16 pan head screw	8[11]	
㉚	φ5×30 truss head tapping screw	8[11]	For guide roller (Option)
㉛	φ16 Guide roller *	1	
㉜	φ5×25 Hexagon head tapping screw	2	
㉝	M5×12 Hexagon head screw	2	
㉞	Fischer plug 6×30	2	

\*4 types, φ16, φ25, φ30, φ35



1. These diagrams represent a right-hand opening type. The left-hand opening type is a mirror image of these diagrams.
2. Door orientation is right-handed if the door is opened rightwards as viewed from the maintenance panel and left-handed if the door is opened leftwards.