



LINEAR ENGINE

MM50/80

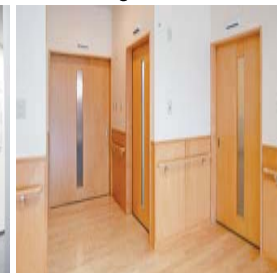
- Quiet
- Clean
- Clamp-proof
- Assist function
- No affect during power outage

Recommended installation areas



- Office building
 - Meeting room
 - Smoking room
 - Office entrance
- Hospital & Welfare facilities
 - Living room
 - Clinic
 - Multifunctional toilets
- Factory
 - Clean room
 - Meeting room
- Public facilities
 - Multifunctional toilets
 - Child room

Office entrance Living room



Assist function

After moving the door to direction of opening about 2cm, the door will open automatically, and after a certain time, the door will close automatically.

Highly safe return function

It can return the door immediately to a reverse direction when the door hit the body or obstacles during its opening.

Electronic locks compatible

If you use specialized electronic lock (referring to page 10) and combined with the card reader, you can create an enter management system.

Automatic type and assist type

This model includes 2 types: Automatic type and assist type. You can choose for your purpose.

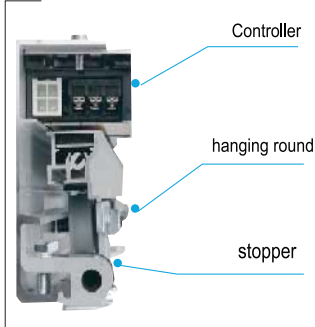
Function	Automatic type	Assist type	Description
Assist function	Standard	Standard	Manually move the door by 2cm, the door will automatically open.
Hold full open	Standard	Standard	Withstand the door fully open for more than 3 seconds, the door will keep at the opening status.
Free stop	Standard	Standard	When the door is pushed back manually by 80mm during its opening, the door will stop at any position.
Half open	No	Standard	Adjust the opening scope by adjusting the knob between half-opening and full-opening.
Safety Stop	Standard	Standard	When the door detects the obstacle continuously by 2 times at the same position, the door would automatically stop for safety.
Equipped with electronic locks	Option	No	Choose to install electronic locks.
Synchronized opening	Standard	No	Use two engines to form the Bi-parting door.

Specifications

Model	MM 50	MM 80
Required power capacity	AC100V 10% 50/60Hz MAX: 4A	
Operating temperature	-10 ~ 40 °C	
Power consumption	Average when operating 0.2Wh/Once (Door Weight: 50kg/door for MM50, 80kg for MM80 /door)	
	Standby	No pushing force 2.8W (Starting sensors and auxiliary sensors are not included)
		Under pushing force 5.8W (Starting sensors and auxiliary sensors are not included)
Motor type	Magnet brushless DC linear motor movable type	
Thrust generation	When three stators are all fully lapped: 40N	
Door weight	20 ~ 50kg / Door	20 ~ 80kg / Door
Door width	> 700mm (If the electric lock equipped : > 800mm)	
※ Self Weight	About 7kg	
Opening speed	0.2~0.5 m/sec (set default: 0.4 m/sec)	
Closing speed	Automatic type	0.2~0.5 m/sec (set default: 0.3 m/sec)
	Assist type	0.2m/sec (fixed)
Hold open time	1 ~ 10 seconds .When it's set at maximum, it enters into ratchet action status (Set default: 3sec)	

※ Weight may vary depending on rail length.

Section



Section

