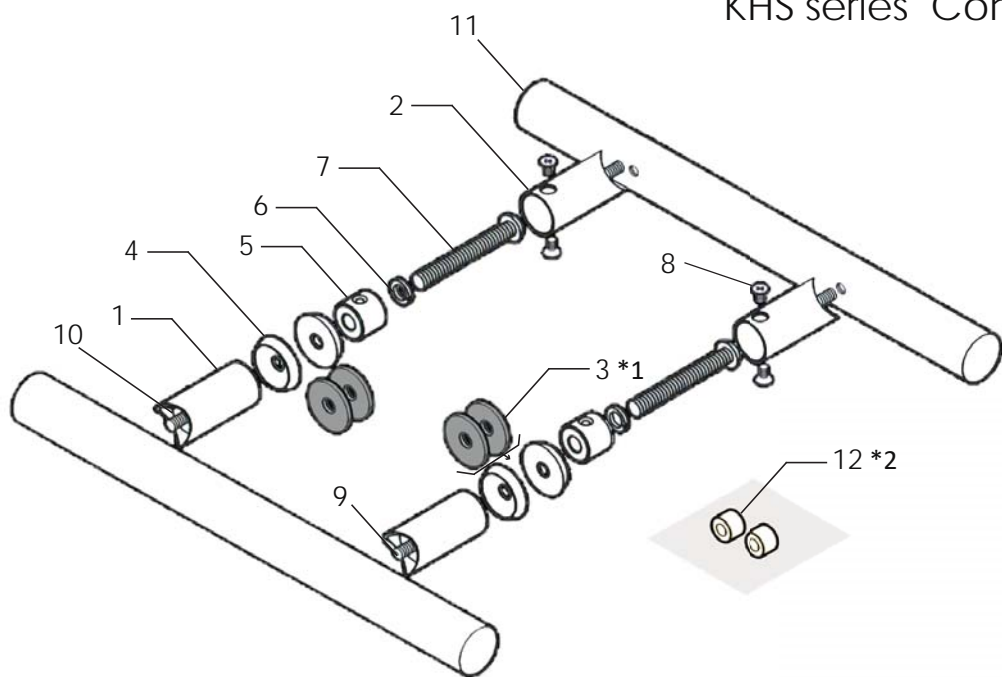
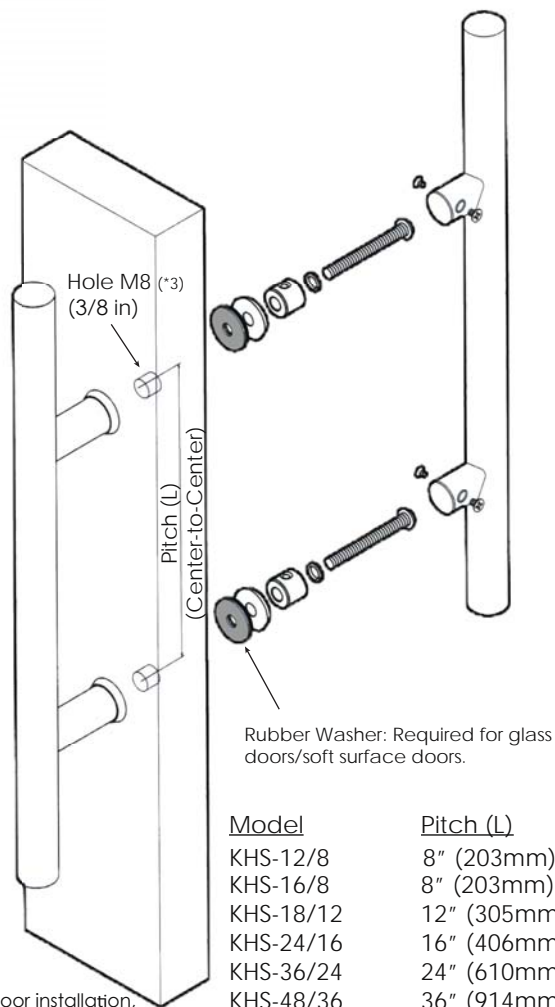


KHS series Contemporary Door Handle



Item	QTY
1. Handle stand A	2
2. Handle stand B	2
3. Rubber washer (*1Required for glass doors/soft surface doors.)	4
4. End cap	4
5. Fixing bracket	2
6. Spring washer	2
7. Center bolt	2
8. Screw	4
9. Stand bolt	2
10. Stand fixing plate	4
11. Handle pipe	2
12. Rubber bush (*2For glass door.)	2



Model	Pitch (L)
KHS-12/8	8" (203mm)
KHS-16/8	8" (203mm)
KHS-18/12	12" (305mm)
KHS-24/16	16" (406mm)
KHS-36/24	24" (610mm)
KHS-48/36	36" (914mm)
KHS-60/48	48" (1219mm)
KHS-72/60	60" (1524mm)

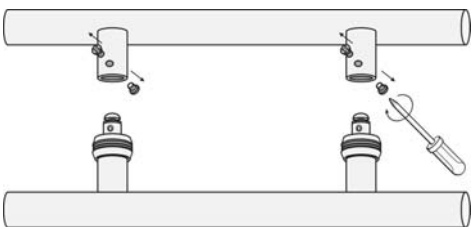
*3 : For glass door installation, prepare M12 hole (1/2in).



380 N BROADWAY SUITE 302
JERICO NY 11753 U.S.A.

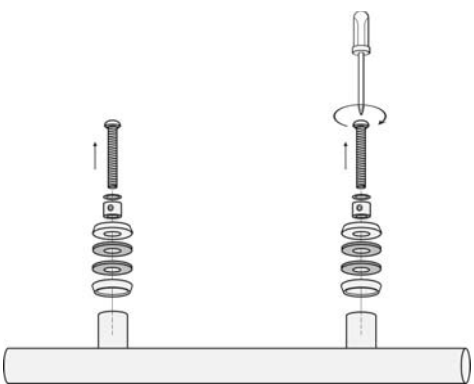
P: +1-516-933-6016
F: +1-516-933-6018
E: ktc@kenwa.net
<http://kenwa-america.com>

1



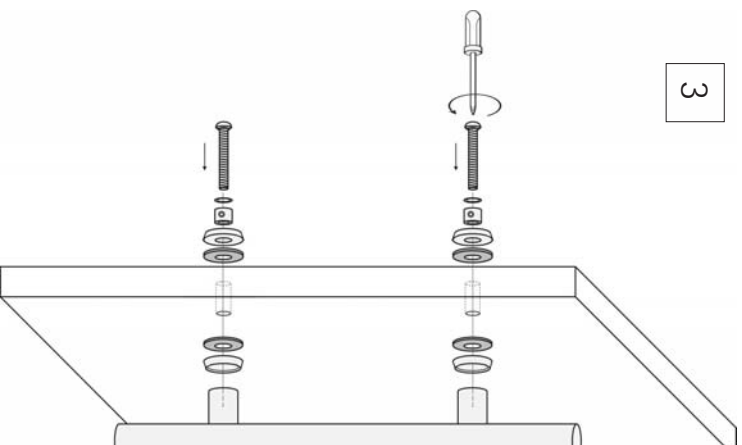
Unscrew 4 x M4 screws by screwdriver.

2



Loosen 2 x M8 center bolts by screwdriver.

3

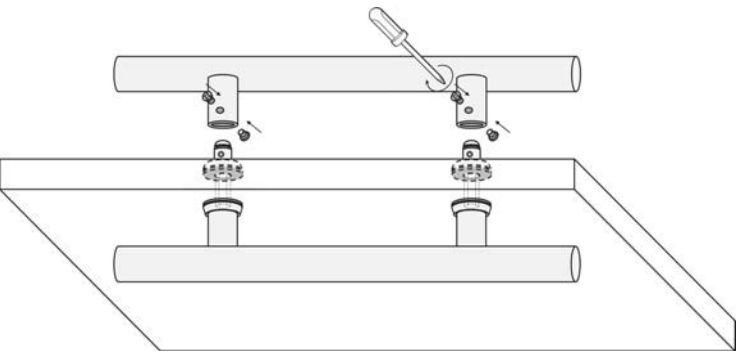


3-1. Drill mounting holes on the door.
(Hole size/pitch: See page 1)

3-2. Mount the outer handle on the door along with rubber washers, end caps, fixing brackets and spring washers as shown in the left figure.
(For glass door, use rubber bush.)

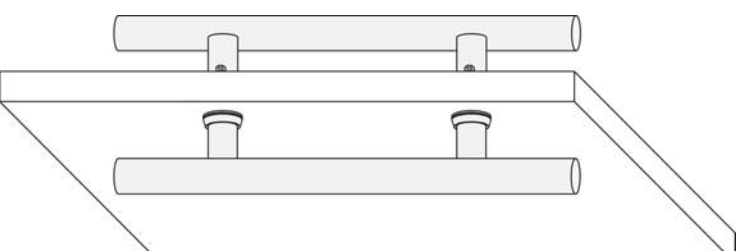
3-3. Tighten 2 x M8 center bolts by screwdriver.

4



4-1. Mount the inner handle aligned to the outer handle.

4-2. Tighten 4 x M4 screws by screwdriver.



Completed.