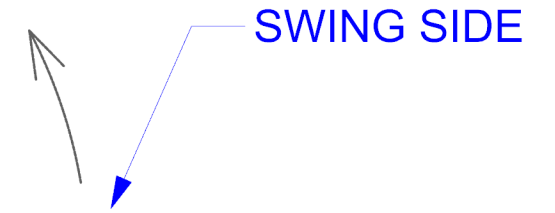


INTERIOR

STANDARD FINISH: ANODIZED, BLACK, CLEAR, DARK BRONZE,
SPECIAL FINISHES ARE AVAILABLE



SWING SIDE

120V AC. 60 HZ. 15A.
BY ELEC. CONTRACTOR

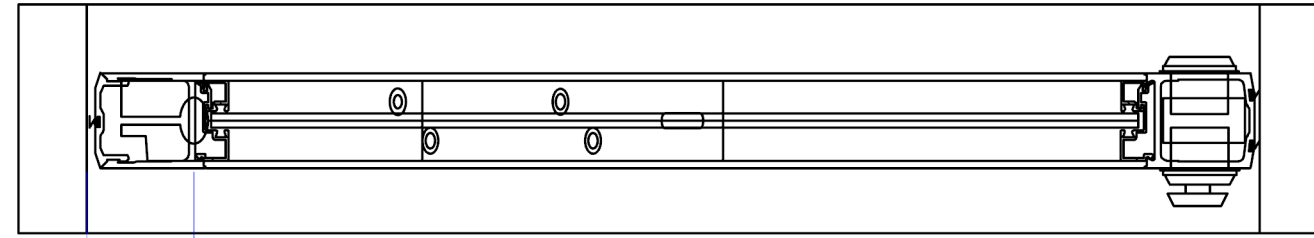
REINFORCEMENT
BY OTHERS
IF NEEDED

MICOM SMART SWING SW-800

REINFORCEMENT
BY OTHERS
IF NEEDED



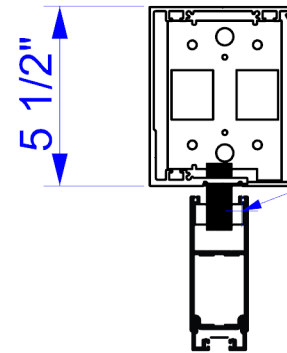
ALUMINUM, WOOD OR
HOLLOW METAL DOORS
AND FRAMES BY OTHERS



2 3/4"

HEADER LENGTH=DOOR WIDTH

TOP VIEW



5 1/2"

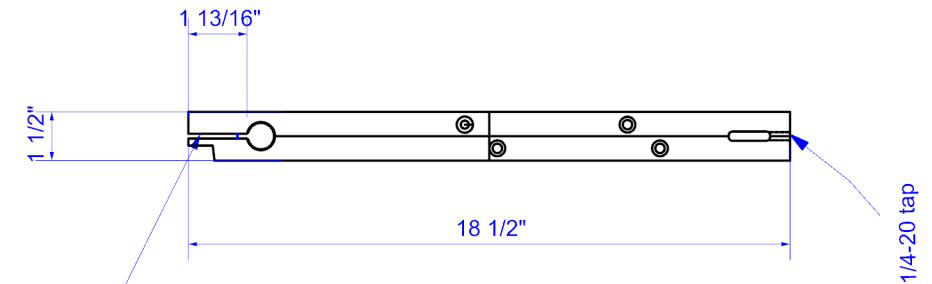
HINGE SIDE
TOP RAIL
NEEDS CUT
OUT ON BACK
OF DOOR FOR
OPERATOR ARM
MIN 1 5/8" X
DEPTH OF WEB

VERTICAL SECTION



1/4-20 tap

5/8"



1 13/16"

1 1/2"

18 1/2"

1/4-20 tap

1/4-20 tap

CENTER HUNG ARM

FRONT VIEW



MICOM Americas Inc.

240 Viceroy Road, Vaughan, ON
L4K 3N9, Toronto, Canada
Tel : +1 905 851 8688
www.micomamericas.ca

CLIENT :

PROJECT :

DRAWING TITLE

LEFT HAND - CENTER HUNG

Notes:

ALL DIMENSIONS ARE IN INCH, UNLESS OTHERWISE SPECIFIED.

Architect

REVISIONS

REV	DATE	DESCRIPTION	CHKD	APP.
01	10.19.18	FOR APPROVAL		

SCALE AS NOTED	DATE 10.19.18	DRAWN BY M.K	CHECKED BY	APPROVED BY
-------------------	------------------	-----------------	------------	-------------

SECTION. LH - CENTER HUNG	SHEET NO. 05
------------------------------	-----------------