

KH series

Contemporary Door Handles



 KENWA



KENWA

KH series Contemporary Door Handles



Classic SUS Models

Simple, yet aesthetic.

Employing SUS304 high-endurance stainless steel, KH series stainless model door handles are highly resistant to rust, corrosion and stain, and also resist scaling and retain strength at high heat/freezing chill.

The bright, shiny and easily maintained surface provides modern and attractive appearance.

Easy to clean, ideal for strict hygiene conditions such as hospitals, restaurants, kitchens, lavatories, store fronts and many other places.

Suitable for indoor and outdoor uses.

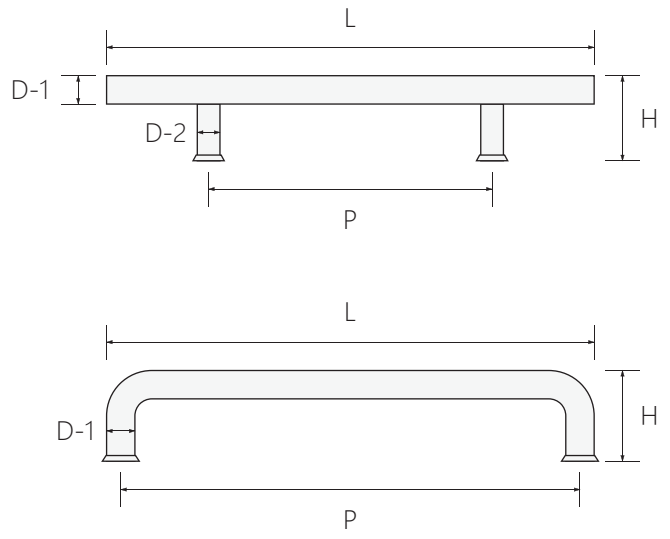
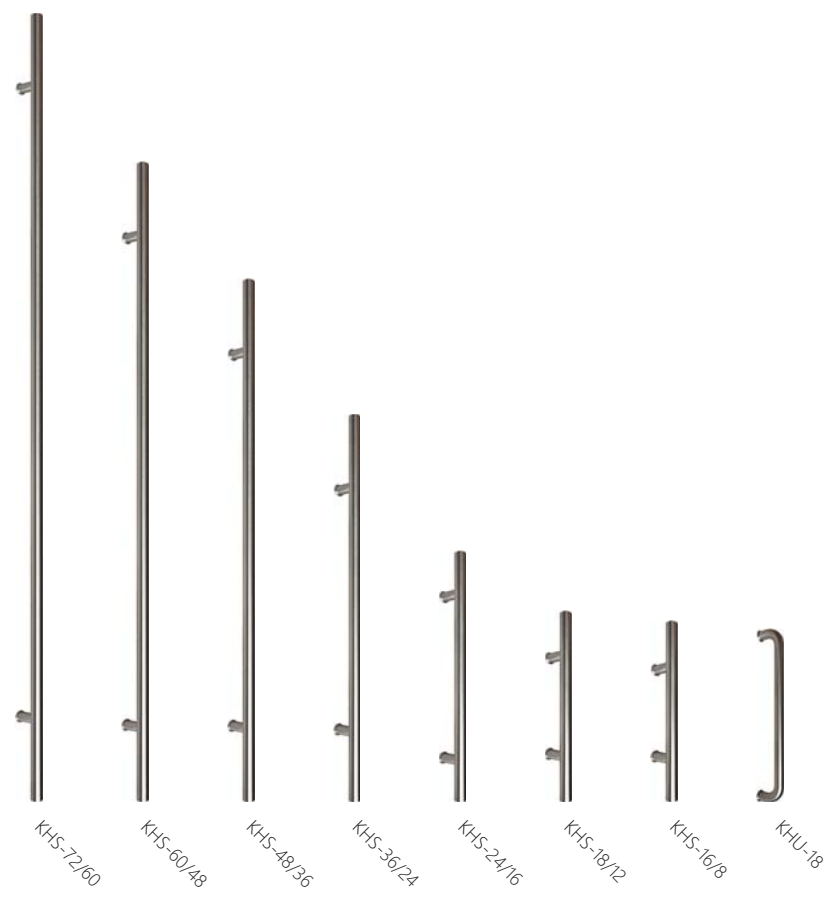


Open to new possibilities.



KH series Contemporary Door Handles

Classic SUS Models



Standard Models

Model#	Description	L	P	H	D-1	D-2
KHS-72/60	72inch ladder style, stainless	1829mm (72")	1524mm (60")	70mm (2.75")	32mm (1.25")	25mm (1")
KHS-60/48	60inch ladder style, stainless	1524mm (60")	1219mm (48")	70mm (2.75")	32mm (1.25")	25mm (1")
KHS-48/36	48inch ladder style, stainless	1219mm (48")	914mm (36")	70mm (2.75")	32mm (1.25")	25mm (1")
KHS-36/48	36inch ladder style, stainless	914mm (36")	610mm (24")	70mm (2.75")	32mm (1.25")	25mm (1")
KHS-24/16	24inch ladder style, stainless	610mm (24")	406mm (16")	70mm (2.75")	32mm (1.25")	25mm (1")
KHS-18/12	18inch ladder style, stainless	457mm (18")	305mm (12")	63mm (2.47")	25mm (1")	22mm (0.87")
KHS-16/8	16inch ladder style, stainless	406mm (16")	203mm (8")	63mm (2.47")	25mm (1")	22mm (0.87")
KHU-18	18inch U-style, stainless	483mm (19")	457mm (18")	70mm (2.75")	25mm (1")	-

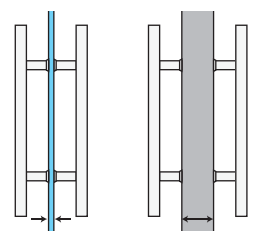
- Rubber bush (for glass door installation) and decorative cap are included as standard.



- Standard set comes as a pair of door pulls for inside and outside of a single door.



- Applicable door thickness: 3/16 to 2 3/8" (5 to 60mm)



- Standard finish: Brushed stainless (Chrome or matte black available for custom order.)





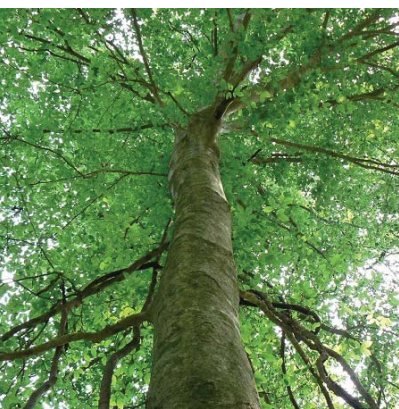
KH series Contemporary Door Handles



Wooden Grip Models

Beauty of nature.

The KH series wooden grip model comes with SUS304 high-endurance stainless steel and beautiful wooden grip made of Zelkova. Natural surface of wood offers authentic modern appearance. Antibacterial - keeps you odor free and feeling fresh, ideal for strict hygiene conditions such as hospitals, restaurants, kitchens, lavatories, store fronts and many other places. Moisture free, clean and soft hand feel wooden grip is perfect for sensitive skin.

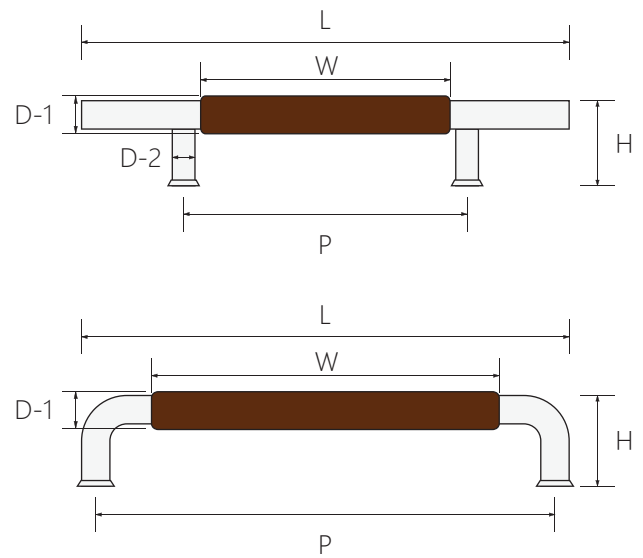
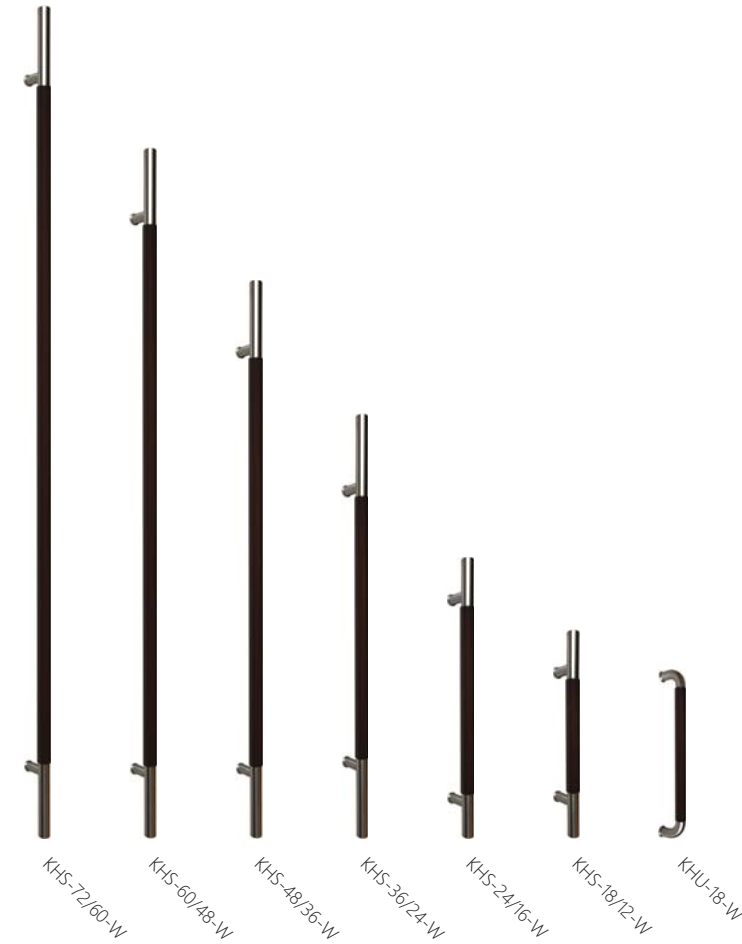


Open to
new
possibilities.



KH series Contemporary Door Handles

Wooden Grip Models



Standard Models

Model#	Description	L	P	H	D-1	D-2	W
KHS-72/60-W	72inch ladder style handle, wood grip	1829mm (72")	1524mm (60")	73mm (2.87")	35mm (1.38")	25mm (1")	1474mm (58")
KHS-60/48-W	60inch ladder style handle, wood grip	1524mm (60")	1219mm (48")	73mm (2.87")	35mm (1.38")	25mm (1")	1169mm (46")
KHS-48/36-W	48inch ladder style handle, wood grip	1219mm (48")	914mm (36")	73mm (2.87")	35mm (1.38")	25mm (1")	864mm (34")
KHS-36/48-W	36inch ladder style handle, wood grip	914mm (36")	610mm (24")	73mm (2.87")	35mm (1.38")	25mm (1")	560mm (22")
KHS-24/16-W	24inch ladder style handle, wood grip	610mm (24")	406mm (16")	73mm (2.87")	35mm (1.38")	25mm (1")	356mm (14")
KHS-18/12-W	18inch ladder style handle, wood grip	457mm (18")	305mm (12")	66mm (2.6")	30mm (1.18")	22mm (0.87")	235mm (9.25")
KHU-18-W	18inch U-style handle, wood grip	483mm (19")	457mm (18")	73mm (2.87")	30mm (1.18")	-	333mm (13.1")

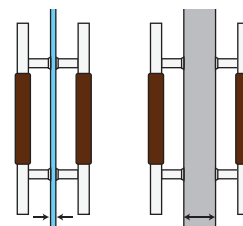
- Rubber bush (for glass door installation) and decorative cap are included as standard.



- Standard set comes as a pair of door pulls for inside and outside of a single door.



- Applicable door thickness: 3/16 to 2 3/8" (5 to 60mm)

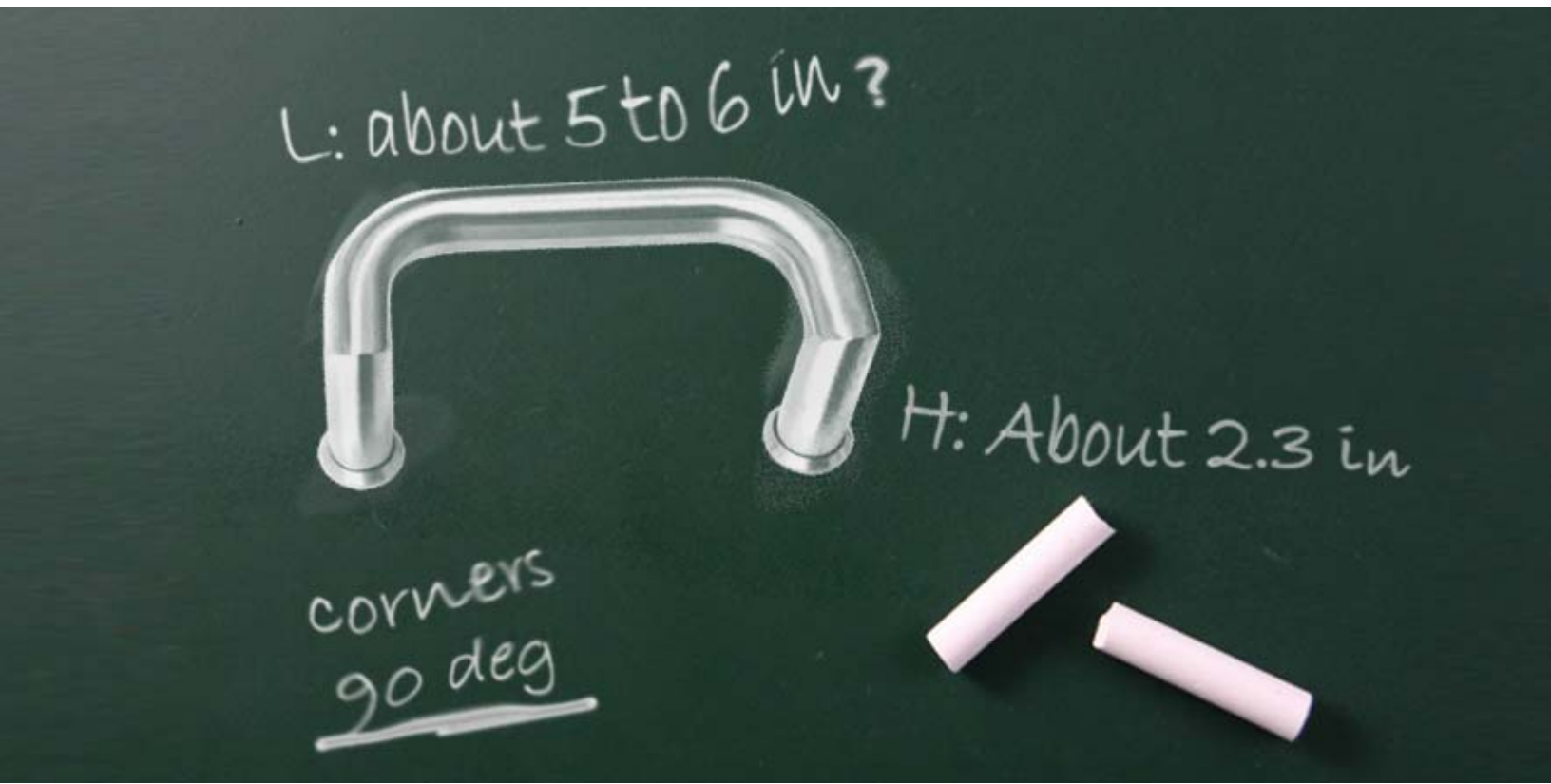


- Standard finish: Brushed stainless with dark brown grip. (Chrome or matte black with other grip colors available for custom order.)





KH series Contemporary Door Handles



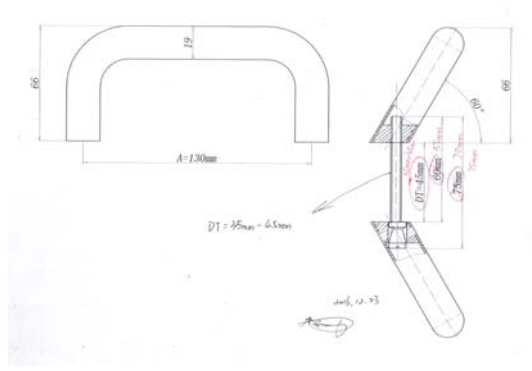
Custom Handles

We make 'one-of-a-kind' handles for you.

KENWA offers you "custom-made" door handles uniquely designed by you.

We will produce both the standard stainless handle and the stainless with wooden grip handle based on your specific request of the size and finishes. (The minimum order quantity may apply.)

If you are looking for the "one-of-a-kind" door handles in particular specifications that will perfectly suit your projects, please contact us.



More innovative door solutions from KENWA

Auto Hinge - Self-closing Door Hinges



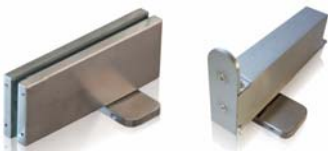
- Door Hinge + Closer, all-in-one.
- Easy installation and clean looking.
- Dual Speed Control – Both closing speed and damper speed are adjustable.
- Choice of hold open or non hold open.

NSC/DSC series Sliding Door Closer



- Innovative solution adding self-closing feature to your manual sliding door.
- Utilizes spring wire device and rotary gear damper for safe and smooth self-closing + soft-closing.
- Dual Speed Control – Both closing speed and damper speed are adjustable.

PDC100/100W series Pivot Door Closer



- Easy installation, saving COST & TIME – Surface mount, no need to make a digging or cavity on floor/tiles.
- Double acting - Open to 90 or 150° each side.
- Dual speed control - Both closing speed and latching speed are adjustable.
- Choice of hold open or non hold open.

Invisible Door Hardware



- The high performance concealed door closer and the completely hidden door hinge suitable for wooden, steel and aluminum doors.
- Offers beautiful, contemporary streamline appearance to the doors.
- Perfect for hotel guest rooms / conference rooms / reception rooms / modern storage / powder rooms / hallway doors etc.

KH series

Contemporary Door Handles



KENWA Trading Corporation
380 N Broadway Ste 302, Jericho NY 11753 USA
P: 1-516-933-6016
F: 1-516-933-6018
E: ktc@kenwa.net
W: <http://kenwa-america.com>