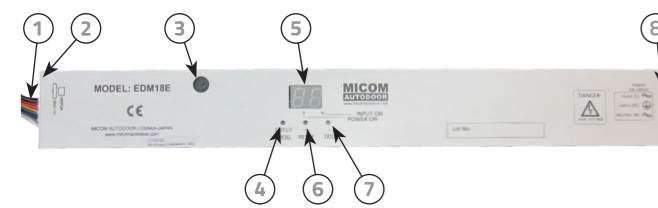


EDM-18E Control Box

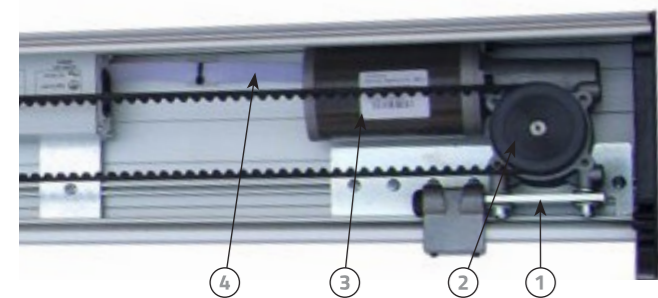
EDM-18E Control Box



No.	Description
1. EMICON	Connection of EMICON Harness to Control by Plug in
2. Motor	Connection of Motor to Control by Plug in
3. Buzzer	Audible indication of error status or other applications
4. Enter Prog.	Hold to enter programme mode
5. LED Display	LED Display is a visual display for the installer to correctly set up and operate EDM-E Operator. LED Display: - LED1 - Function/Application - LED2 - Parameter Value - POWER LED - Power Indicator - INPUT LED - Signal Input Indicator
6. + Reset	* Operational settings - value can be increased. Reset Button - Operation factory settings can be restored.
7. Test	* Operational settings - value can be decreased. Test Button - Used to check the basic function of the operator when servicing or installation. Activation signal for Test open cycle.
8. Power	Input 200-240V AC 3pin Plug in

EDM-18E Motor Gear Box

EDM-18E Motor Gear Box



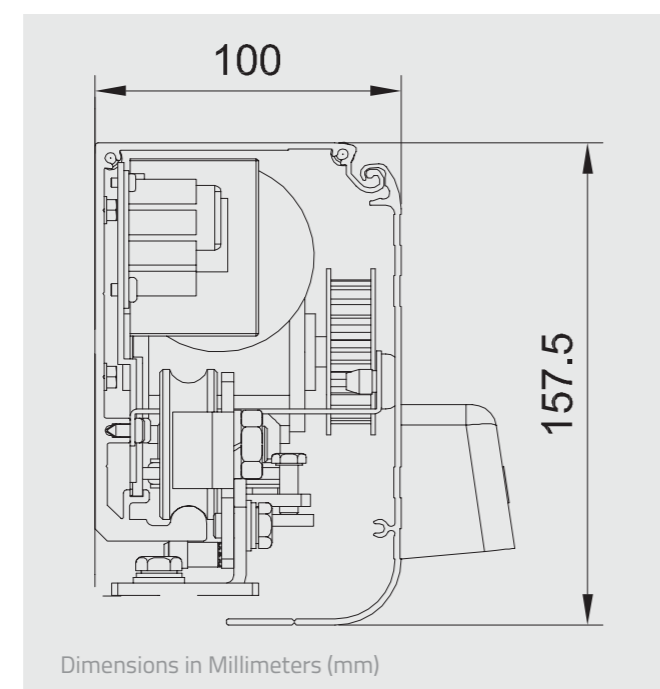
No.	Description
1.	Motor Mount Base with Vibration Proof Rubber
2.	Motor Pulley
3.	Brushless DC Motor
4.	Connection Harness to EDM MD Control Box

Delivery

Delivery

MICOM EDM-18E Series - Supplied in formats as follows:

- > **EDM 'COMPLETE OPERATOR'** consisting of: Base Rail, Cover, Control Box, EMICON Board, Motor Gear Box, End Covers, Tooth Belt, Belt Bracket Link Assembly, Belt Connection Single & Double Door, Idle Pulley Assembly, Hanger Roller Brackets x4 and Stopper x 2.
- > **COMPLETE OPERATOR** - Standard Rail Length: Single Leaf - 2000mm, Double leaf - 6000mm
- > **EDM 'FULL KIT'** - (Without Rail & Cover) consisting of: Control Box, EMICON Board, Motor Gear Box, Tooth Belt (7M), Belt Bracket Link Assembly, Belt Connection Single & Double Door, Idle Pulley Assembly, Hanger Roller Brackets x4 and stopper x 2.
- > **RAIL & COVER** - (Material Only) - Standard Length: Single Leaf - 2000mm, Double leaf - 6000mm



Specification

Model	18E-S	18E-D
Application	Single	Double
Door Weight (max)	100kg	90kg x2
Power Consumption	100 - 240V AC / 50 - 60 Hz - 2A	
Power Output	24V DC, 300mA (for accessory only)	
Control System	Microprocessor	
Motor	Encloses Brushless DC Motor	
E-Lock	Electromagnetic Lock - Fail Secure Lk1/FailSafe Lk2 (optional)	
Battery	Allows open or closing in an emergency situation or when power fails	
Open Door Speed	Adjustable 70 - 750mm/s (adjustable)	
Close Door Speed	Adjustable 70 - 400mm/s (adjustable)	
Open Door Timer	0 - 60sec (10 steps adjustable)	
Partial Open	5 - 90% (10 steps adjustable)	
Safety Obstruction	Detects when opening/closing by Safety Return/Safety Stop	
Pressure - Door to Frame	A small force may be adjusted in order to keep the door closed or open. Force from 0 to 8kg (5 step adjustable)	
Operating Temperature & Humidity	Ambient temperature 0°C - 50°C (no consideration or icing). Ambient humidity 30% - 85% (environment must be free of hazardous materials)	



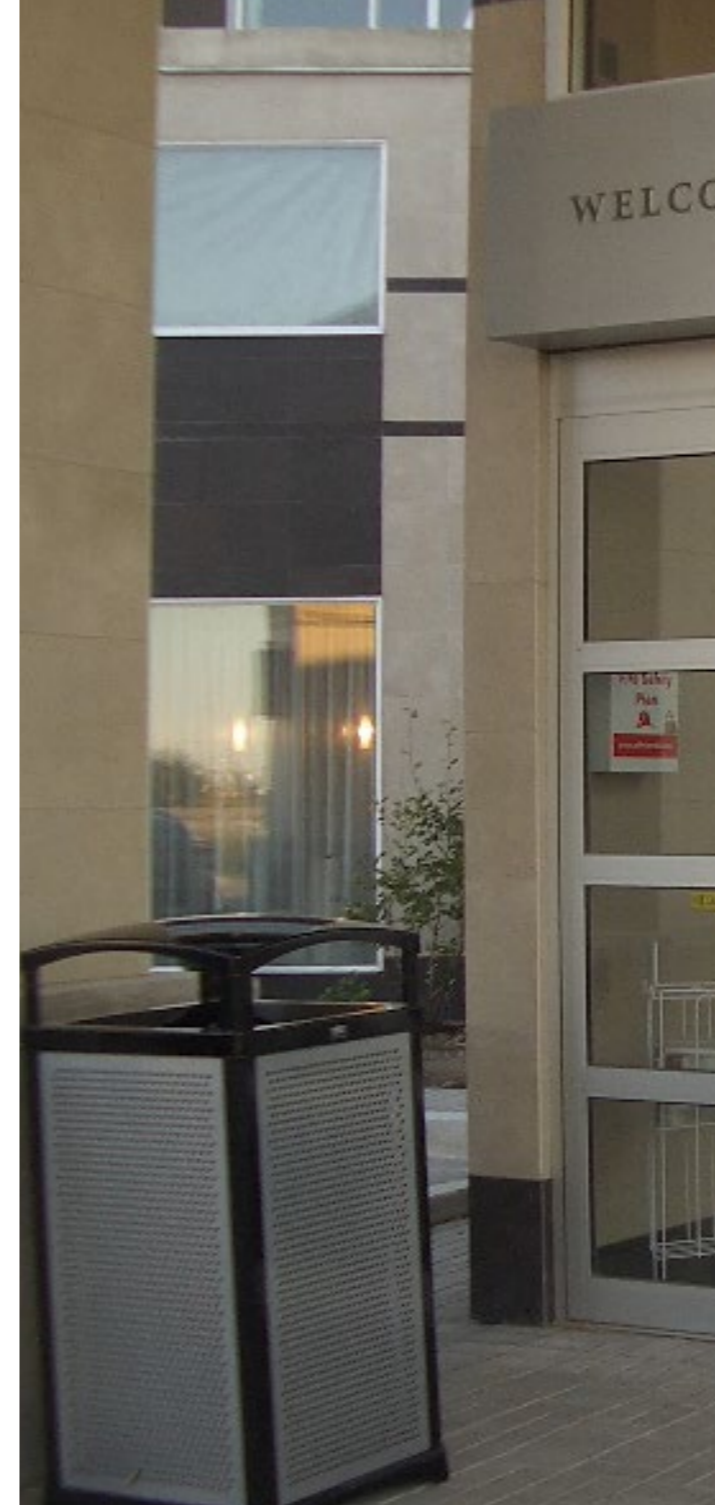
UK / European Office
The Grainger Suite / Regent Centre / Gosforth
Newcastle upon Tyne // NE3 3PF // United Kingdom

Telephone. +44 (0)191 233 6323
Facsimile. +44 (0)191 284 0222
Email. info@micomautodoor.com

Head Office - Japan
12th Floor // Tower West // Umeda Skybuilding 1-30
Oyodonaka 1-Chome // Kita-ku Osaka 531-0076 // Japan

Telephone. (0081) 6 6 454 9721
Facsimile. (0081) 6 6 454 9726
Email. info@micomautodoor.com

100% Japanese Quality and Engineering
MICOM & NHN are registered trademarks and divisions of Kenwa Company Limited, Osaka, Japan



EDM-18E

Automatic sliding door operator
Exceptional quality, economical prices



Introduction

Introduction

EDM 18E is the perfect choice for automatic sliding pedestrian doors. Its compact size and aesthetic housing design will compliment any installation project.

Utilising our advanced microprocessor control unit with a brushless motor, produces near silent and smooth motion up to 750mm/s. Highly reliable, using only quality electronic parts, EDM 18E adapts effortlessly to varied door widths and weight capacities, up to 90kg per leaf.

Installation is simple and achieved in several steps. Starting with a one-time learning cycle of the door stroke and offering variable function adjustment for single or double door leaves. Operational parameters can be adjusted to suit individual installations, through the easily accessible LED visual display found on EDM 18E Control box face.

Designed specifically to meet the highest demands of the European market, EDM 18E is CE, TUV and EN16005 compliant. Offering a host of benefits and features, EDM 18E is truly cost effective providing you with assured long term service.

Main Features

- > Economical & Cost Effective Sliding Door Solution
- > Power input 100-240VAC (50/60Hz)
- > Door Capacity 90kg per leaf
- > Door Open Speed 750mm/s max
- > Memorized one time door stroke
- > Easily accessible sensor and threshold safety Inputs
- > 24V DC Power Output for Accessories
- > LED Digital Control Display
- > Wide Parameter Adjustments
- > Door Speed & Braking Adjustment
- > Energy Saving (% Open) Function
- > Emergency Stop (Open or Close)
- > Ratchet or Flip-Flop Function
- > Battery Open/Close with Monitor as standard
- > Electromagnetic Lock (Fail Safe/Secure) Option
- > Safe & Long Term Operation Guaranteed
- > Selector Switch supplied as standard
- > EN16005 compliant

EMICON Communicator - Quick and Easy Connections to Accessories and Ancillaries

Our EMICON interface board offers a quick means of installation. Communication of all accessory and safety signals are combined with battery input and lock control. Working in parallel, these signals are controlled via our Selector Switch for greater ease of operation by the end user.

MICOM Rotary Key Selector Switch is supplied as standard together with EDM-E Series operator allowing selection of 4 separate door modes. In a fire retardant black plastic mount box with cover design in white, MICOM function selectors can be fitted to walls or aluminium frames alike.

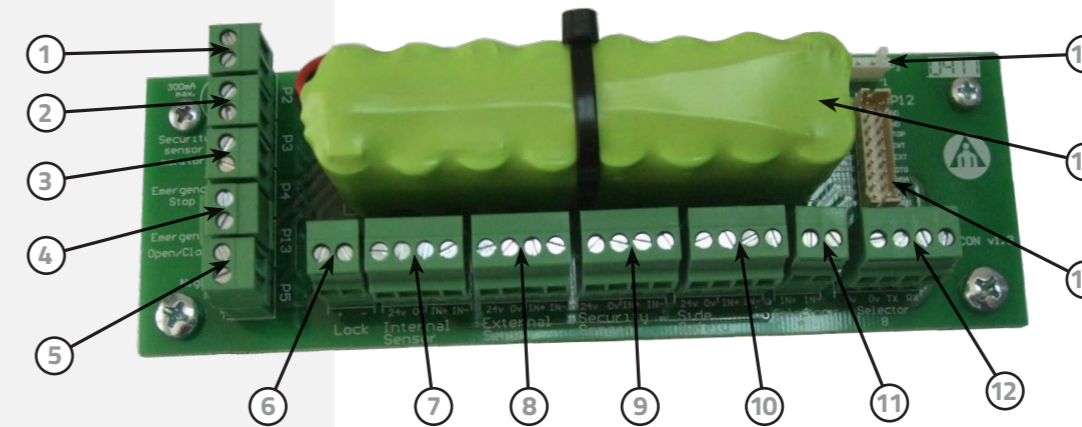
Functions:

- > Lock – Night/Closed
- > Exit Only
- > Automatic
- > Hold Open



The EMICON communicator interconnects the Control Unit with the different peripheral components as follows:

No:	Description
1.	24V Output 0.3A max
2.	Monitoring Input
3.	Emergency Stop Input
4.	Emergency Open/Close Input
5.	Night Switch
6.	E-Lock Output
7.	Internal Sensor with 24V Output



No:	Description
8.	External Sensor with 24V Output
9.	Safety Beam Sensor with 24V Output
10.	Side Screen Sensor with 24V Output
11.	Selector A
12.	Selector B
13.	Control Unit Connector
14.	Battery
15.	Battery Connector

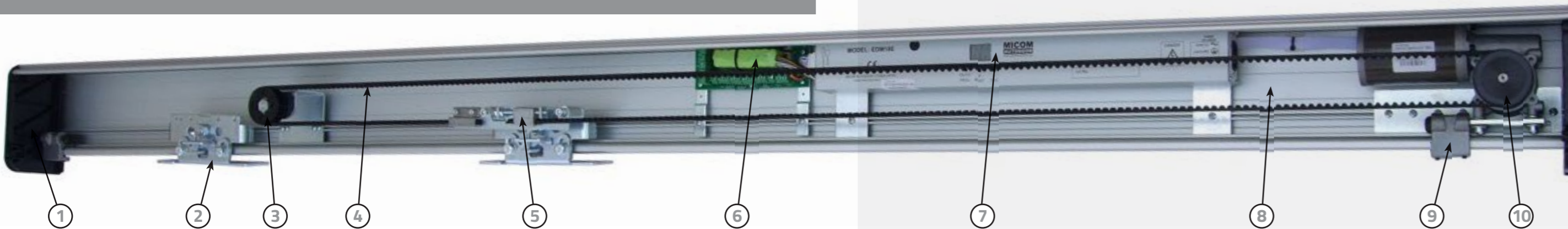
Accessories

Accessories

MICOM Digital Selector Switch offers further options of door control. A digital touchpad, allows selection of 6 separate door modes. Economic in design, MICOM Digital Selectors are easy to install and operate. Supplied in a fire retardant black plastic mount box, with attractive cover design in white, our function selectors can be fitted to walls or aluminium frames alike.

Functions:

- > Lock – Night/Closed
- > Exit Only
- > Entry Only
- > Automatic
- > Hold Open
- > Half Open



Product Summary

Product Summary

No:	Description
1.	End Cover
2.	Hanger Roller Bracket
3.	Idle Pulley
4.	Belt
5.	Belt Tightening Bracket
6.	EMICON Board with Battery
7.	Control Box EDM-18E
8.	Base Rail
9.	End Stopper
10.	Motor Gear Box EDM-18E

EDM-E Series

EDM 18E



EDM 30E



EDM 18E 2S/D



EDM18E RD



EDM-18E Series complies with all new EU regulations (EN16005) for enhanced automatic door safety. Designed for use with a new range of sensors such as BEA IXIO-S & Optex OA-Axis-T.

IXIO-S is an active infrared presence sensor. The tridimensional area of its infrared curtain protects the users from any contact with the doors. Adjustment is made easier with an LCD screen offering 10 different widths of curtains, to cover the full travel area of the door.

OA-AXIS-T Series based on active infrared technology. Developed as a combination sensor for threshold safety and activation, the OA-Axis T is in compliance with the latest European and local regulations as EN 16005 and DIN 18650, tested and approved by the German test organisation TÜV. Due to its variety in output options the OA-Axis series meets the requirements in various markets throughout Europe.



EDM-18E when used without monitoring can also accept all current sensors available in the world market today, such as BEA Eagle & Optex OA-203C together with threshold safety beam protection.

EAGLE Series is a microwave sensor which detects movement. Utilising a planar antenna together with multi directional detection modes, the EAGLE offers high levels of stability and reliability. It is the solution for all types of automatic doors, irrespective of the surroundings utilizing K-band microwave technology.



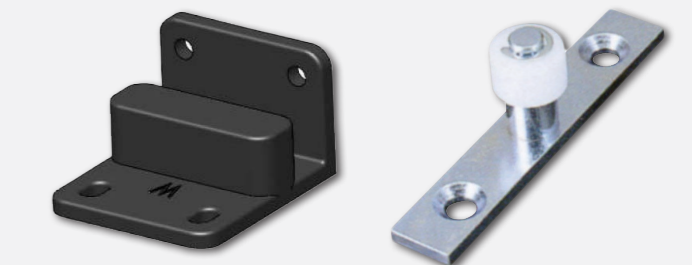
OS-12C Safety Beam is an active infrared safety beam system. Its amplifier and sensor heads are designed for fast, simple installation while maintaining the highest standards of safety and reliability. Recognized by door professionals worldwide for its reliability and resistance to sunlight and other interference.



Door Profile Solutions - Various Fixed and Moving profile designs available without glass.



Frameless Glass Brackets - Fitting Brackets for 10mm and 12mm Glass thickness available without glass.



> Floor Guides - Various floor guides for framed and frameless glass doors available.